

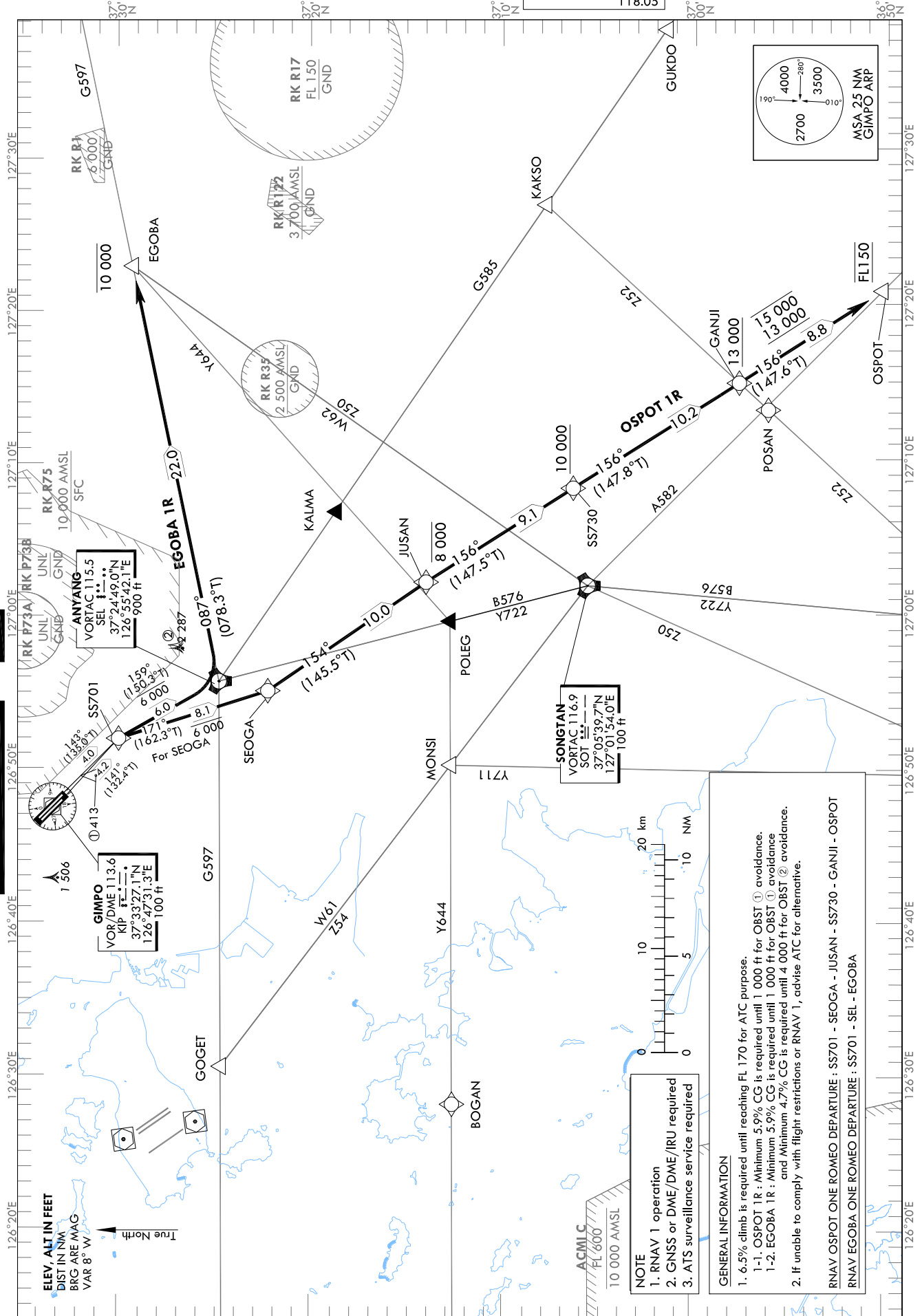
STANDARD DEPARTURE CHART  
INSTRUMENT (SID) - ICAO

Note : Departure under ICAO Flight Procedures.

TRANSITION ALT 14 000  
TRANSITION LVL FL 140

SEOUL DEP	125.15
	121.4
	124.8
GIMPO TWR	118.1
	118.05

SEOUL/Gimpo Intl(RKSS)  
RWY 14L/R  
RNAV OSPOT 1R, RNAV EGOBA 1R



Change : Information of OBST height and symbol.

SEOUL/Gimpo Intl(RKSS)  
RWY 14L/R  
RNAV OSPOT 1R, RNAV EGOBA 1R

AERONAUTICAL DATA TABULATION

Standard Instrument Departure Procedure Coding Tables

RNAV OSPOT 1R												
Serial Number	Path Descriptor	Waypoint Identifier	Fly-over	Course/Track °M(°T)	Distance (NM)	Turn direction	Altitude (ft)	Speed (kt)	Coordinates	VPA/RDH	Navigation specification	Remarks
001	CF	SS701	-	14L-143(135.0) 14R-141(132.4)	14L-4.0 14R-4.2	R	-	-	373001.9 N 1265158.7 E (RDL 338 SEL/D6, RDL 142 KIP/D5)	-	RNAV 1	-
002	TF	SEOGA	-	171 (162.3)	8.1	-	-6 000	-	372216.6 N 1265504.6 E (RDL 350 SOT/D18, RDL 160 KIP/D13)	-	RNAV 1	-
003	TF	JUSAN	-	154 (145.5)	10.0	-	-8 000	-	371403.3 N 1270208.6 E (RDL 162 SEL/D12, RDL 157 KIP/D23)	-	RNAV 1	-
004	TF	SS730	-	156 (147.5)	9.1	-	+10 000	-	370624.1 N 1270813.9 E (RDL 159 SEL/D21, RDL 090 SOT/D5)	-	RNAV 1	-
005	TF	GANJI	-	156 (147.8)	10.2	-	+13 000	-	365745.7 N 1271501.2 E (RDL 158 SEL/D31, RDL 135 SOT/D13)	-	RNAV 1	-
006	TF	OSPOT	-	156 (147.6)	8.8	-	@FL 150	-	365018.1 N 1272054.9 E (RDL 158 SEL/D40, RDL 143 SOT/D22)	-	RNAV 1	-

RNAV EGOBA 1R												
Serial Number	Path Descriptor	Waypoint Identifier	Fly-over	Course/Track °M(°T)	Distance (NM)	Turn direction	Altitude (ft)	Speed (kt)	Coordinates	VPA/RDH	Navigation specification	Remarks
001	CF	SS701	-	14L-143(135.0) 14R-141(132.4)	14L-4.0 14R-4.2	R	-	-	373001.9 N 1265158.7 E (RDL 338 SEL/D6, RDL 142 KIP/D5)	-	RNAV 1	-
002	TF	SEL	-	159 (150.3)	6.0	-	-6 000	-	372449.0 N 1265542.1 E (RDL 354 SOT/D20, RDL 151 KIP/D11)	-	RNAV 1	-
003	TF	EGOBA	-	087 (078.3)	22.0	-	-10 000	-	372914.7 N 1272245.9 E (RDL 086 SEL/D22, RDL 043 SOT/D29)	-	RNAV 1	-

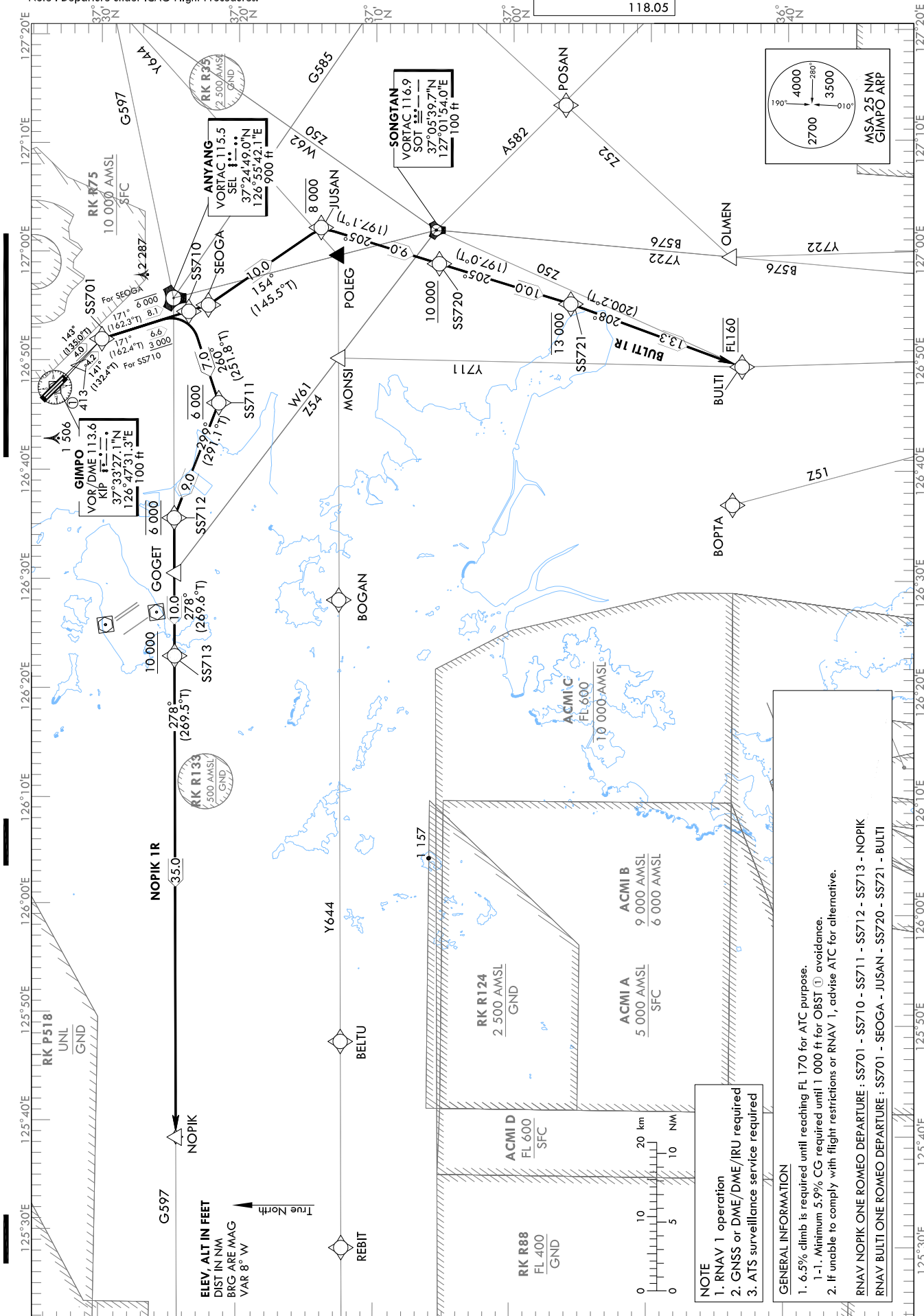
STANDARD DEPARTURE CHART  
INSTRUMENT (SID) - ICAO

Note : Departure under ICAO Flight Procedures.

TRANSITION ALT 14 000  
TRANSITION LVL FL 140

SEOUL	DEP	125.15
		121.4
		124.8
GIMPO	TWR	118.1
		118.05

SEOUL/Gimpo Intl(RKSS)  
RWY 14L/R  
RNAV NOPIK 1R, RNAV BULTI 1R



Change : Information of OBST height and symbol.

SEOUL/Gimpo Intl(RKSS)  
RWY 14L/R  
RNAV NOPIK 1R, BULTI 1R

AERONAUTICAL DATA TABULATION

Standard Instrument Departure Procedure Coding Tables

RNAV NOPIK 1R												
Serial Number	Path Descriptor	Waypoint Identifier	Fly-over	Course/Track °M(°T)	Distance (NM)	Turn direction	Altitude (ft)	Speed (kt)	Coordinates	VPA/RDH	Navigation specification	Remarks
001	CF	SS701	-	14L-143(135.0) 14R-141(132.4)	14L-4.0 14R-4.2	R	-	-	373001.9 N 1265158.7 E (RDL 338 SEL/D6, RDL 1.42 KIP/D5)	-	RNAV 1	-
002	TF	SS710	-	171 (162.4)	6.6	-	+3 000	-	372342.2 N 1265429.3 E (RDL 350 SOT/D19, RDL 158 KIP/D11)	-	RNAV 1	-
003	TF	SS711	-	260 (251.8)	7.0	-	@6 000	-	372130.5 N 1264608.9 E (RDL 255 SEL/D8, RDL 193 KIP/D12)	-	RNAV 1	-
004	TF	SS712	-	299 (291.1)	9.0	-	@6 000	-	372443.8 N 1263537.7 E (RDL 278 SEL/D16, RDL 235 KIP/D13)	-	RNAV 1	-
005	TF	SS713	-	278 (269.6)	10.0	-	+10 000	-	372439.0 N 1262301.4 E (RDL 278 SEL/D26, RDL 310 SOT/D36)	-	RNAV 1	-
006	TF	NOPIK	-	278 (269.5)	35.0	-	-	-	372412.0 N 1253905.0 E (RDL 278 SEL/D61, RDL 294 SOT/D69)	-	RNAV 1	-

RNAV BULTI 1R												
Serial Number	Path Descriptor	Waypoint Identifier	Fly-over	Course/Track °M(°T)	Distance (NM)	Turn direction	Altitude (ft)	Speed (kt)	Coordinates	VPA/RDH	Navigation specification	Remarks
001	CF	SS701	-	14L-143(135.0) 14R-141(132.4)	14L-4.0 14R-4.2	R	-	-	373001.9 N 1265158.7 E (RDL 338 SEL/D6, RDL 1.42 KIP/D5)	-	RNAV 1	-
002	TF	SEOGA	-	171 (162.3)	8.1	-	-6 000	-	372216.6 N 1265504.6 E (RDL 350 SOT/D18, RDL 160 KIP/D13)	-	RNAV 1	-
003	TF	JUSAN	-	154 (145.5)	10.0	-	-8 000	-	371403.3 N 1270208.6 E (RDL 162 SEL/D12, RDL 157 KIP/D23)	-	RNAV 1	-
004	TF	SS720	-	205 (197.1)	9.0	-	+10 000	-	370526.4 N 1265850.5 E (RDL 181 SEL/D20, RDL 273 SOT/D3)	-	RNAV 1	-
005	TF	SS721	-	205 (197.0)	10.0	-	-13 000	-	365551.6 N 1265511.3 E (RDL 189 SEL/D29, RDL 217 SOT/D11)	-	RNAV 1	-
006	TF	BULTI	-	208 (200.2)	13.3	-	@FL 160	-	364322.3 N 1264929.7 E (RDL 195 SEL/D42, RDL 212 SOT/D24)	-	RNAV 1	-

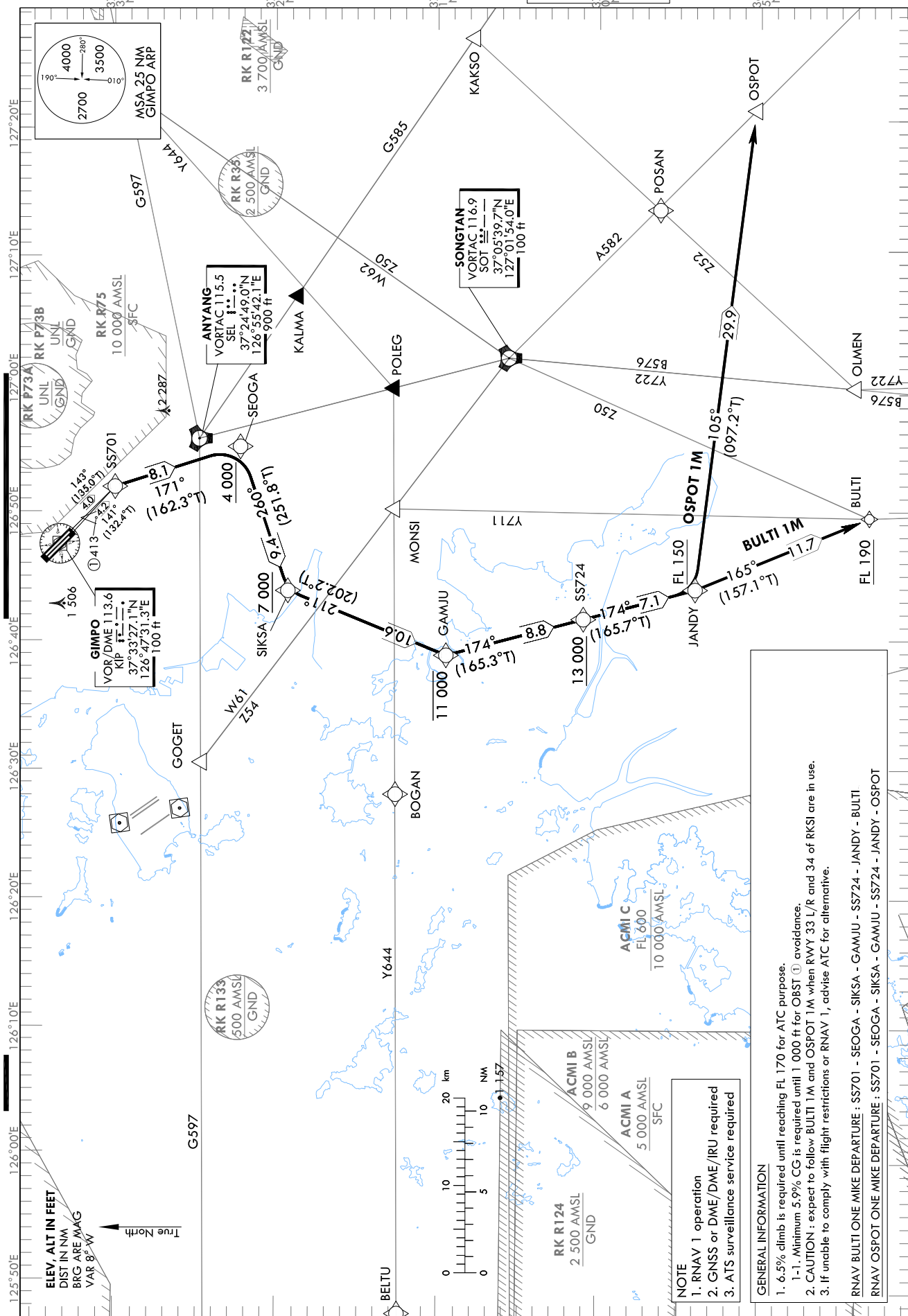
STANDARD DEPARTURE CHART  
INSTRUMENT (SID) - ICAO

Note : Departure under ICAO Flight Procedures.

TRANSITION ALT 14 000  
TRANSITION LVL FL 140

SEOUL	DEP	125.15
		121.4
		124.8
GIMPO	TWR	118.1
		118.05

SEOUL/Gimpo Intl(RKSS)  
RWY 14L/R  
RNAV BULTI 1M, RNAV OSPOT 1M



**NOTE**

- RNAV 1 operation
- GNSS or DME/DME/IRU required
- ATS surveillance service required

**GENERAL INFORMATION**

- 6.5% climb is required until reaching FL 170 for ATC purpose.
  - 1-1. Minimum 5.9% CG is required until 1 000 ft for OBST (1) avoidance.
- CAUTION : expect to follow BULTI 1M and OSPOT 1M when RWY 33 L/R and 34 of RKSI are in use.
- If unable to comply with flight restrictions or RNAV 1, advise ATC for alternative.

RNAV BULTI ONE MIKE DEPARTURE : SS701 - SEOGA - GAMJU - SS724 - JANDY - BULTI  
RNAV OSPOT ONE MIKE DEPARTURE : SS701 - SEOGA - SIKSA - GAMJU - SS724 - JANDY - OSPOT

Change : Information of OBST height and symbol.

SEOUL/Gimpo Intl(RKSS)  
RWY 14L/R  
RNAV BULTI 1M, OSPOT 1M

AERONAUTICAL DATA TABULATION

Standard Instrument Departure Procedure Coding Tables

RNAV BULTI 1M

Serial Number	Path Descriptor	Waypoint Identifier	Fly-over	Course/Track °M(°T)	Distance (NM)	Turn direction	Altitude (ft)	Speed (kt)	Coordinates	VPA/RDH	Navigation specification	Remarks
001	CF	SS701	-	14L-143(135.0) 14R-141(132.4)	14L-4.0 14R-4.2	R	-	-	373001.9 N 1265158.7 E (RDL 338 SEL/D6, RDL 142 KIP/D5)	-	RNAV 1	-
002	TF	SEOGA	-	171 (162.3)	8.1	-	+4 000	-	372216.6 N 1265504.6 E (RDL 350 SOT/D18, RDL 160 KIP/D13)	-	RNAV 1	-
003	TF	SIKSA	-	260 (251.8)	9.4	-	+7 000	-	371920.3 N 1264355.4 E (RDL 248 SEL/D11, RDL 200 KIP/D14)	-	RNAV 1	-
004	TF	GAMJU	-	211 (202.2)	10.6	-	-11 000	-	370933.1 N 1263855.8 E (RDL 229 SEL/D20, RDL 290 SOT/D19)	-	RNAV 1	-
005	TF	SS724	-	174 (165.3)	8.8	-	+13 000	-	370103.4 N 1264143.1 E (RDL 213 SEL/D26, RDL 262 SOT/D17)	-	RNAV 1	-
006	TF	JANDY	-	174 (165.7)	7.1	-	+FL 150	-	365408.6 N 1264359.3 E (RDL 205 SEL/D32, RDL 239 SOT/D18)	-	RNAV 1	-
007	TF	BULTI	-	165 (157.1)	11.7	-	+FL 190	-	364322.3 N 1264929.7 E (RDL 195 SEL/D42, RDL 212 SOT/D24)	-	RNAV 1	-

RNAV OSPOT 1M

Serial Number	Path Descriptor	Waypoint Identifier	Fly-over	Course/Track °M(°T)	Distance (NM)	Turn direction	Altitude (ft)	Speed (kt)	Coordinates	VPA/RDH	Navigation specification	Remarks
001	CF	SS701	-	14L-143(135.0) 14R-141(132.4)	14L-4.0 14R-4.2	R	-	-	373001.9 N 1265158.7 E (RDL 338 SEL/D6, RDL 142 KIP/D5)	-	RNAV 1	-
002	TF	SEOGA	-	171 (162.3)	8.1	-	+4 000	-	372216.6 N 1265504.6 E (RDL 350 SOT/D18, RDL 160 KIP/D13)	-	RNAV 1	-
003	TF	SIKSA	-	260 (251.8)	9.4	-	+7 000	-	371920.3 N 1264355.4 E (RDL 248 SEL/D11, RDL 200 KIP/D14)	-	RNAV 1	-
004	TF	GAMJU	-	211 (202.2)	10.6	-	-11 000	-	370933.1 N 1263855.8 E (RDL 229 SEL/D20, RDL 290 SOT/D19)	-	RNAV 1	-
005	TF	SS724	-	174 (165.3)	8.8	-	+13 000	-	370103.4 N 1264143.1 E (RDL 213 SEL/D26, RDL 262 SOT/D17)	-	RNAV 1	-
006	TF	JANDY	-	174 (165.7)	7.1	-	+FL 150	-	365408.6 N 1264359.3 E (RDL 205 SEL/D32, RDL 239 SOT/D18)	-	RNAV 1	-
007	TF	OSPOT	-	105 (097.2)	29.9	-	-	-	365018.1 N 1272054.9 E (RDL 158 SEL/D40, RDL 143 SOT/D22)	-	RNAV 1	-

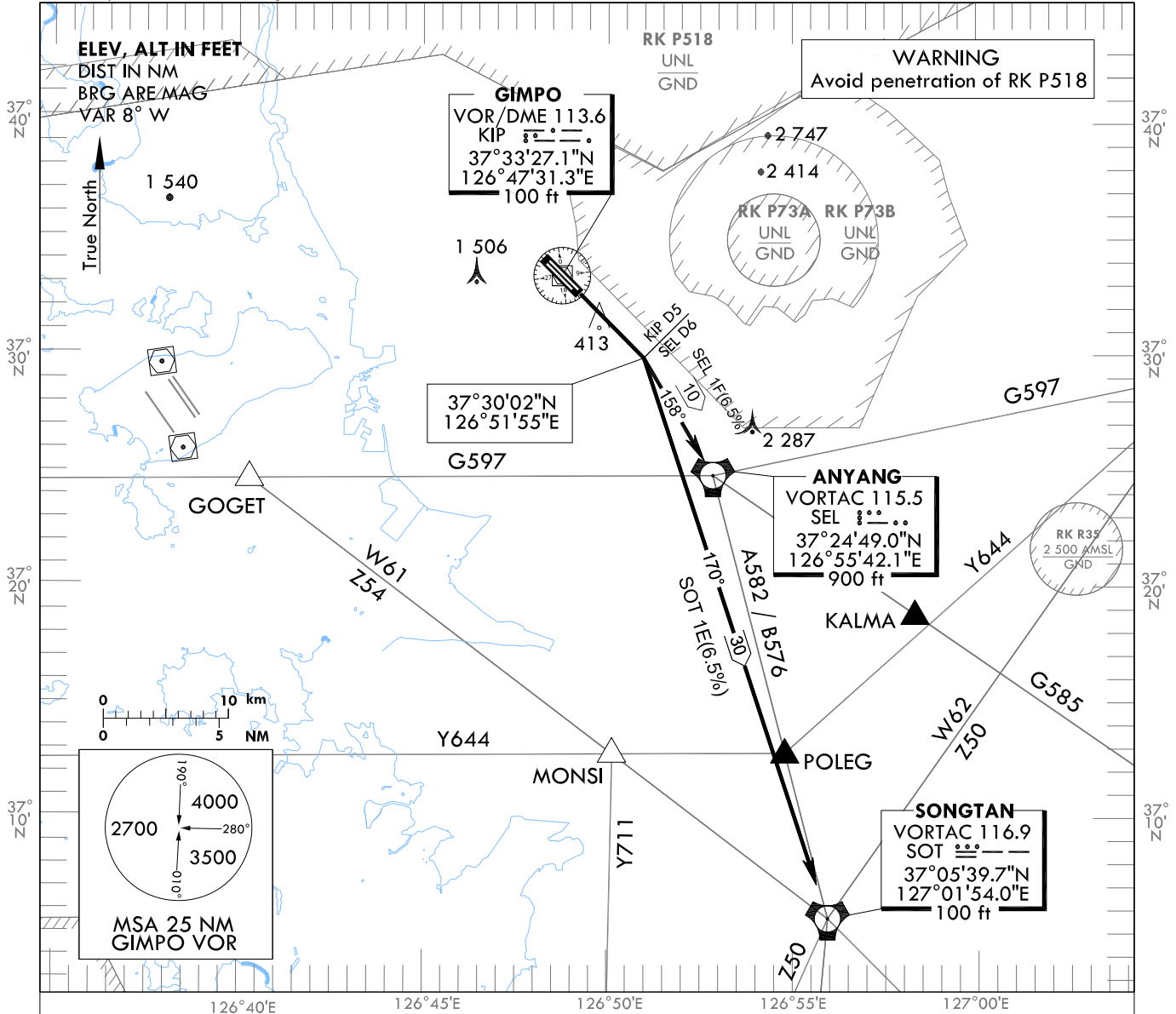
STANDARD DEPARTURE CHART  
INSTRUMENT (SID) - ICAO

TRANSITION ALT 14 000  
TRANSITION LVL FL 140

SEOUL DEP	125.15
	121.4
	124.8
GIMPO TWR	118.1
	118.05

SEOUL/Gimpo Intl(RKSS)  
RWY 14L/R  
SEL 1F, SOT 1E

Note : Departure under ICAO Flight Procedures.



**GENERAL INFORMATION**

1. 6.5% CG necessary for Airspace and ATC purpose and 5.0% for avoiding OBST.
2. If unable to comply with flight restrictions, advise ATC well before departure.
3. Stepped climb : Due to interaction with other routes.

**SEL(ANYANG) ONE FOXTROT DEPARTURE :**

TAKE OFF RWY 14L/R : Direct RDL 143 KIP/D5(if KIP not available , climb on runway heading) turn RIGHT to intercept RDL 338 SEL and proceed to SEL Cross SEL at or above 4 000 ft.  
Maintain 6 000 ft until instructed by ATC.  
- For airway B576 or A582, cross 4DME south of SEL at or above 5 000 ft  
SOT at or above 11 000 ft, 8DME south of SOT at or above FL 150 unless cleared by ATC.  
- For airway G597 cross EGOBA at or above 8 000 ft unless cleared by ATC.

**SOT(SONGTAN) ONE ECHO DEPARTURE :**

TAKE OFF RWY 14L/R : Direct RDL 143 KIP/D5(if KIP not available , climb on runway heading) turn RIGHT to intercept RDL 350 SOT and proceed to SOT. Maintain 6 000 ft until instructed by ATC.

Change : Amended phrases.

**INTENTIONALLY**

**LEFT**

**BLANK**



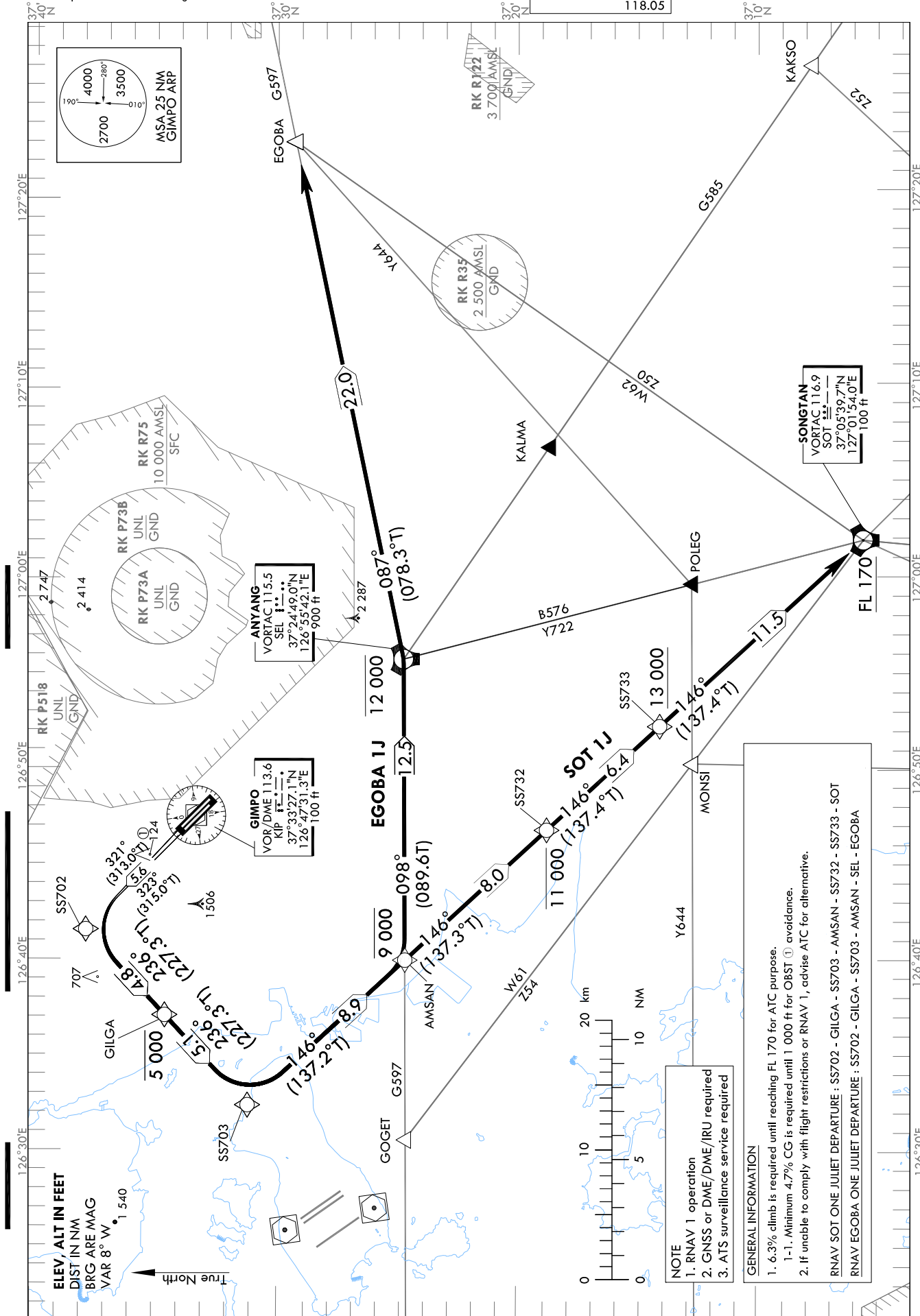
STANDARD DEPARTURE CHART  
INSTRUMENT (SID) - ICAO

Note : Departure under ICAO Flight Procedures.

TRANSITION ALT 14 000  
TRANSITION LVL FL 140

SEOUL	DEP	125.15
		121.4
		124.8
GIMPO	TWR	118.1
		118.05

SEOUL/Gimpo Intl(RKSS)  
RWY 32L/R  
RNAV SOT 1J, RNAV EGOBA 1J



Change : Information of OBST height and symbol and minimum climb gradient.

SEOUL/Gimpo Intl(RKSS)  
RWY 32L/R  
RNAV SOT 1J, RNAV EGOBA 1J

AERONAUTICAL DATA TABULATION

Standard Instrument Departure Procedure Coding Tables

Serial Number	Path Descriptor	Waypoint Identifier	Fly-over	Course/Track °M(°T)	Distance (NM)	Turn direction	Altitude (ft)	Speed (kt)	Coordinates	VPA/ RDH	Navigation specification	Remarks
001	CF	SS702	-	32L-323(315.0) 32R-321(313.0)	5.6	L	-	-	373803.0 N 1264133.7 E (RDL 328 SEL/D17, RDL 322 KIP/D7)	-	RNAV 1	-
002	TF	GILGA	-	236 (227.3)	4.8	-	-5 000	-	373445.5 N 1263704.7 E (RDL 312 SEL/D18, RDL 287 KIP/D8)	-	RNAV 1	-
003	TF	SS703	-	236 (227.3)	5.1	-	-	-	373117.7 N 1263222.3 E (RDL 297 SEL/D20, RDL 268 KIP/D12)	-	RNAV 1	-
004	TF	AMSAN	-	146 (137.2)	8.9	-	-9 000	-	372445.2 N 1263957.2 E (RDL 278 SEL/D13, RDL 223 KIP/D11)	-	RNAV 1	-
005	TF	SS732	-	146 (137.3)	8.0	-	-11 000	-	371851.2 N 1264645.9 E (RDL 238 SEL/D9, RDL 326 SOT/D18)	-	RNAV 1	-
006	TF	SS733	-	146 (137.4)	6.4	-	+13 000	-	371408.6 N 1265211.0 E (RDL 203 SEL/D11, RDL 326 SOT/D12)	-	RNAV 1	-
007	TF	SOT	-	146 (137.4)	11.5	-	+FL 170	-	370539.7 N 1270154.0 E (RDL 173 SEL/D20, RDL 165 KIP/D30)	-	RNAV 1	-

Serial Number	Path Descriptor	Waypoint Identifier	Fly-over	Course/Track °M(°T)	Distance (NM)	Turn direction	Altitude (ft)	Speed (kt)	Coordinates	VPA/ RDH	Navigation specification	Remarks
001	CF	SS702	-	32L-323(315.0) 32R-321(313.0)	5.6	L	-	-	373803.0 N 1264133.7 E (RDL 328 SEL/D17, RDL 322 KIP/D7)	-	RNAV 1	-
002	TF	GILGA	-	236 (227.3)	4.8	-	-5 000	-	373445.5 N 1263704.7 E (RDL 312 SEL/D18, RDL 287 KIP/D8)	-	RNAV 1	-
003	TF	SS703	-	236 (227.3)	5.1	-	-	-	373117.7 N 1263222.3 E (RDL 297 SEL/D20, RDL 268 KIP/D12)	-	RNAV 1	-
004	TF	AMSAN	-	146 (137.2)	8.9	-	-9 000	-	372445.2 N 1263957.2 E (RDL 278 SEL/D13, RDL 223 KIP/D11)	-	RNAV 1	-
005	TF	SEL	-	098 (089.6)	12.5	-	-12 000	-	372449.0 N 1265542.1 E (RDL 354 SOT/D20, RDL 151 KIP/D11)	-	RNAV 1	-
006	TF	EGOBA	-	087 (078.3)	22.0	-	-	-	37291.47 N 1272245.9 E (RDL 086 SEL/D22, RDL 043 SOT/D29)	-	RNAV 1	-

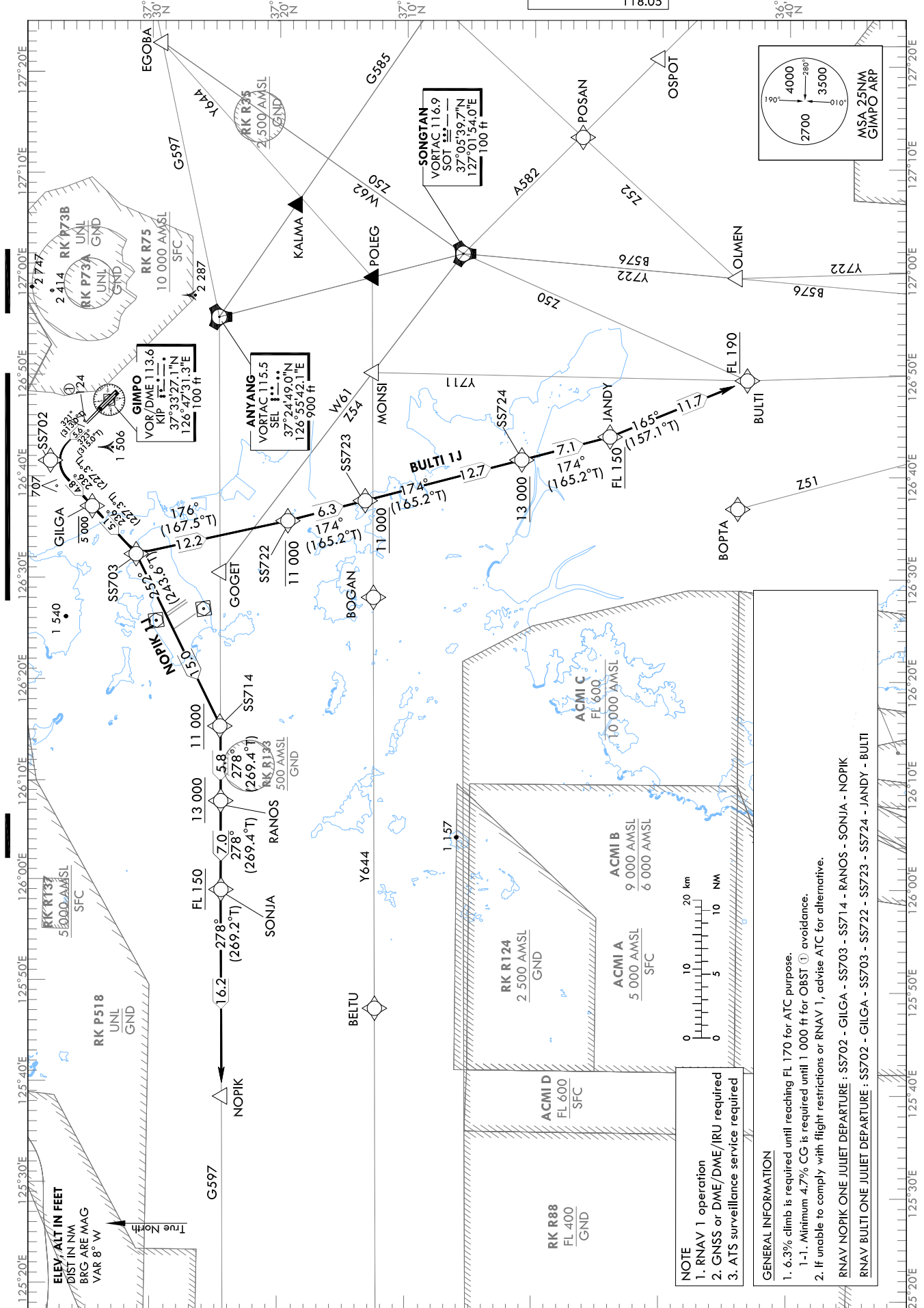
STANDARD DEPARTURE CHART  
INSTRUMENT (SID) - ICAO

Note : Departure under ICAO Flight Procedures.

TRANSITION ALT 14 000  
TRANSITION LVL FL 140

SEOUL	DEP	125.15
		121.4
		124.8
GIMPO	TWR	118.1
		118.05

SEOUL/Gimpo Intl(RKSS)  
RWY 32L/R  
RNAV NOPIK 1J, RNAV BULTI 1J



Change : Information of OBST height and symbol.

SEOUL/Gimpo Intl(RKSS)  
RWY 32L/R  
RNAV NOPIK 1J, RNAV BULTI 1J

AERONAUTICAL DATA TABULATION

Standard Instrument Departure Procedure Coding Tables

RNAV NOPIK 1J

Serial Number	Path Descriptor	Waypoint Identifier	Fly-over	Course/Track °M(°T)	Distance (NM)	Turn direction	Altitude (ft)	Speed (kt)	Coordinates	VPA/RDH	Navigation specification	Remarks
001	CF	SS702	-	32L-323(315.0) 32R-321(313.0)	5.6	L	-	-	373803.0 N 1264133.7 E (RDL 328 SEL/D17, RDL 322 KIP/D7)	-	RNAV 1	-
002	TF	GILGA	-	236 (227.3)	4.8	-	-5 000	-	373445.5 N 1263704.7 E (RDL 312 SEL/D18, RDL 287 KIP/D8)	-	RNAV 1	-
003	TF	SS703	-	236 (227.3)	5.1	-	-	-	373117.7 N 1263222.3 E (RDL 297 SEL/D20, RDL 268 KIP/D12)	-	RNAV 1	-
004	TF	SS714	-	252 (243.6)	15.0	-	+11 000	-	372435.5 N 1261529.3 E (RDL 278 SEL/D32, RDL 305 SOT/D42)	-	RNAV 1	-
005	TF	RANOS	-	278 (269.4)	5.8	-	+13 000	-	372431.4 N 1260809.0 E (RDL 278 SEL/D38, RDL 302 SOT/D47)	-	RNAV 1	-
006	TF	SONJA	-	278 (269.4)	7.0	-	+FL 150	-	372426.5 N 1255924.4 E (RDL 278 SEL/D45, RDL 299 SOT/D53)	-	RNAV 1	-
007	TF	NOPIK	-	278 (269.2)	16.2	-	-	-	372412.0 N 1253905.0 E (RDL 278 SEL/D61, RDL 294 SOT/D69)	-	RNAV 1	-

RNAV BULTI 1J

Serial Number	Path Descriptor	Waypoint Identifier	Fly-over	Course/Track °M(°T)	Distance (NM)	Turn direction	Altitude (ft)	Speed (kt)	Coordinates	VPA/RDH	Navigation specification	Remarks
001	CF	SS702	-	32L-323(315.0) 32R-321(313.0)	5.6	L	-	-	373803.0 N 1264133.7 E (RDL 328 SEL/D17, RDL 322 KIP/D7)	-	RNAV 1	-
002	TF	GILGA	-	236 (227.3)	4.8	-	-5 000	-	373445.5 N 1263704.7 E (RDL 312 SEL/D18, RDL 287 KIP/D8)	-	RNAV 1	-
003	TF	SS703	-	236 (227.3)	5.1	-	-	-	373117.7 N 1263222.3 E (RDL 297 SEL/D20, RDL 268 KIP/D12)	-	RNAV 1	-
004	TF	SS722	-	176 (167.5)	12.2	-	-11 000	-	371924.8 N 1263540.7 E (RDL 259 SEL/D17, RDL 311 SOT/D25)	-	RNAV 1	-
005	TF	SS723	-	174 (165.2)	6.3	-	+11 000	-	371320.6 N 1263740.9 E (RDL 240 SEL/D18, RDL 300 SOT/D21)	-	RNAV 1	-
006	TF	SS724	-	174 (165.2)	12.7	-	+13 000	-	370103.4 N 1264143.1 E (RDL 213 SEL/D26, RDL 262 SOT/D17)	-	RNAV 1	-
007	TF	JANDY	-	174 (165.2)	7.1	-	+FL 150	-	365408.6 N 1264359.3 E (RDL 203 SEL/D32, RDL 239 SOT/D18)	-	RNAV 1	-
008	TF	BULTI	-	165 (157.1)	11.7	-	+FL 190	-	364322.3 N 1264929.7 E (RDL 193 SEL/D42, RDL 212 SOT/D24)	-	RNAV 1	-

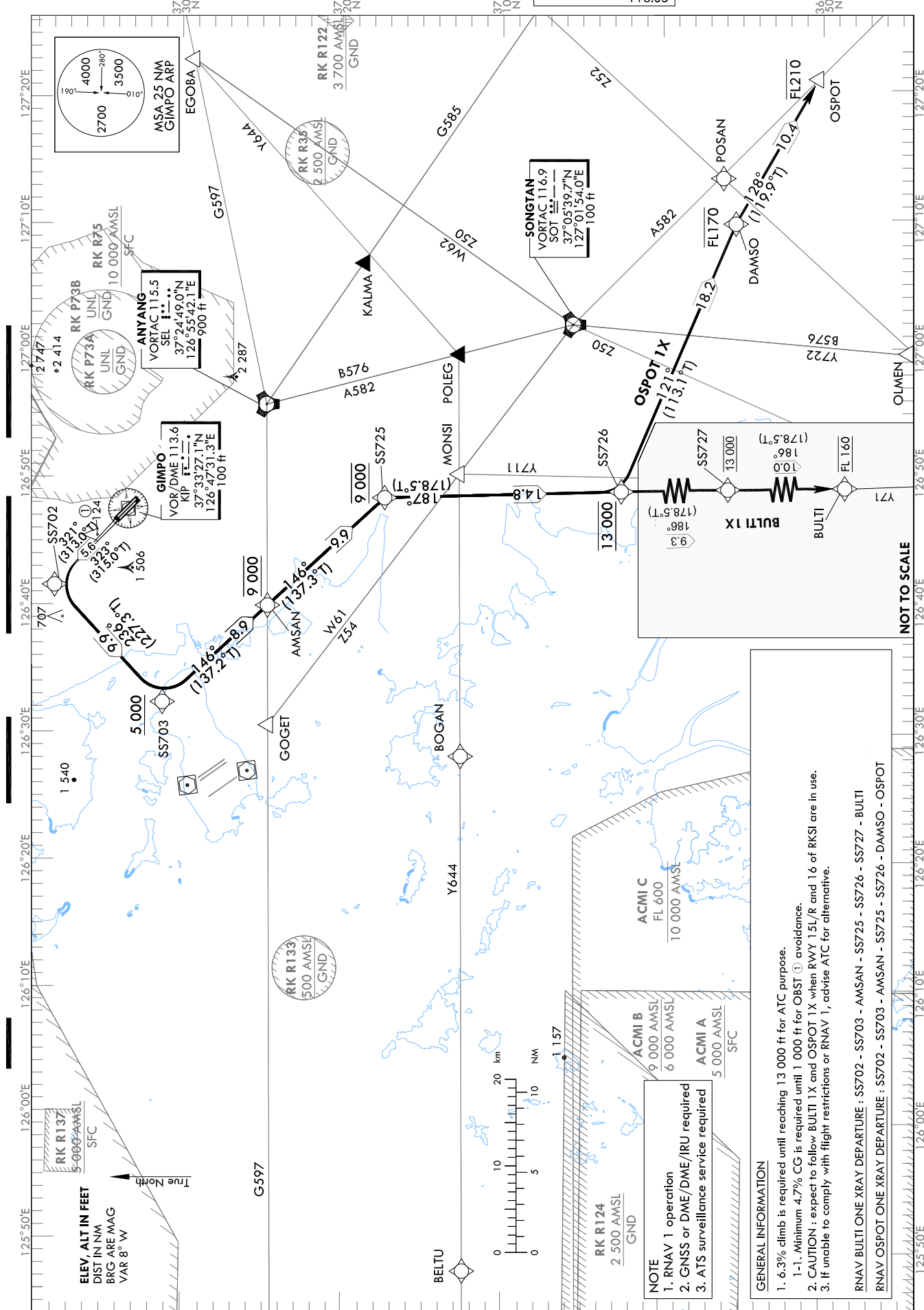
**STANDARD DEPARTURE CHART  
INSTRUMENT (SID) - ICAO**

Note : Departure under ICAO Flight Procedures.

TRANSITION ALT 14 000  
TRANSITION LVL FL 140

SEOUL DEP	125.15
	121.4
	124.8
GIMPO TWR	118.1
	118.05

**SEOUL/Gimpo Intl(RKSS)**  
RWY 32L/R  
RNAV BULTI 1X, RNAV OSPOT 1X



Change : Information of OBST height and symbol.

SEOUL/Gimpo Intl(RKSS)  
RWY 32L/R  
RNAV BULTI 1X, RNAV OSPOT 1X

AERONAUTICAL DATA TABULATION

Standard Instrument Departure Procedure Coding Tables

RNAV BULTI 1X												
Serial Number	Path Descriptor	Waypoint Identifier	Fly-over	Course/Track °M(T)	Distance (NM)	Turn direction	Altitude (ft)	Speed (kt)	Coordinates	VPA/RDH	Navigation specification	Remarks
001	CF	SS702	-	32L-323(315.0) 32R-321(313.0)	5.6	L	-	-	373803.0 N 1264133.7 E (RDL 328 SEL/D17, RDL 322 KIP/D7)	-	RNAV 1	-
002	TF	SS703	-	236 (227.3)	9.9	-	+5 000	-	373117.7 N 1263222.3 E (RDL 297 SEL/D20, RDL 268 KIP/D12)	-	RNAV 1	-
003	TF	AMSAN	-	146 (137.2)	8.9	-	@9 000	-	372445.2 N 1263957.2 E (RDL 278 SEL/D13, RDL 326 SOT/D26)	-	RNAV 1	-
004	TF	SS725	-	146 (137.3)	9.9	-	@9 000	-	371726.4 N 1264823.4 E (RDL 226 SEL/D9, RDL 326 SOT/D16)	-	RNAV 1	-
005	TF	SS726	-	187 (178.5)	14.8	-	@13 000	-	370239.6 N 1264852.6 E (RDL 202 SEL/D23, RDL 262 SOT/D11)	-	RNAV 1	-
006	TF	SS727	-	186 (178.5)	9.3	-	@13 000	-	365332.9 N 1264910.5 E (RDL 197 SEL/D32, RDL 228 SOT/D16)	-	RNAV 1	-
007	TF	BULTI	-	186 (178.5)	10.0	-	@FL 160	-	364322.3 N 1264929.7 E (RDL 195 SEL/D42, RDL 212 SOT/D24)	-	RNAV 1	-

RNAV OSPOT 1X												
Serial Number	Path Descriptor	Waypoint Identifier	Fly-over	Course/Track °M(T)	Distance (NM)	Turn direction	Altitude (ft)	Speed (kt)	Coordinates	VPA/RDH	Navigation specification	Remarks
001	CF	SS702	-	32L-323(315.0) 32R-321(313.0)	5.6	L	-	-	373803.0 N 1264133.7 E (RDL 328 SEL/D17, RDL 322 KIP/D7)	-	RNAV 1	-
002	TF	SS703	-	236 (227.3)	9.9	-	+5 000	-	373117.7 N 1263222.3 E (RDL 297 SEL/D20, RDL 268 KIP/D12)	-	RNAV 1	-
003	TF	AMSAN	-	146 (137.2)	8.9	-	@9 000	-	372445.2 N 1263957.2 E (RDL 278 SEL/D13, RDL 326 SOT/D26)	-	RNAV 1	-
004	TF	SS725	-	146 (137.3)	9.9	-	@9 000	-	371726.4 N 1264823.4 E (RDL 226 SEL/D9, RDL 326 SOT/D16)	-	RNAV 1	-
005	TF	SS726	-	187 (178.5)	14.8	-	@13 000	-	370239.6 N 1264852.6 E (RDL 202 SEL/D23, RDL 262 SOT/D11)	-	RNAV 1	-
006	TF	DAMSO	-	121 (113.1)	18.2	-	-FL 170	-	365529.2 N 1270943.6 E (RDL 167 SEL/D31, RDL 156 SOT/D12)	-	RNAV 1	-
007	TF	OSPOT	-	128 (119.9)	10.4	-	-FL 210	-	365018.1 N 1272054.9 E (RDL 158 SEL/D40, RDL 143 SOT/D22)	-	RNAV 1	-

Change : Information of AMSAN location from SOT.



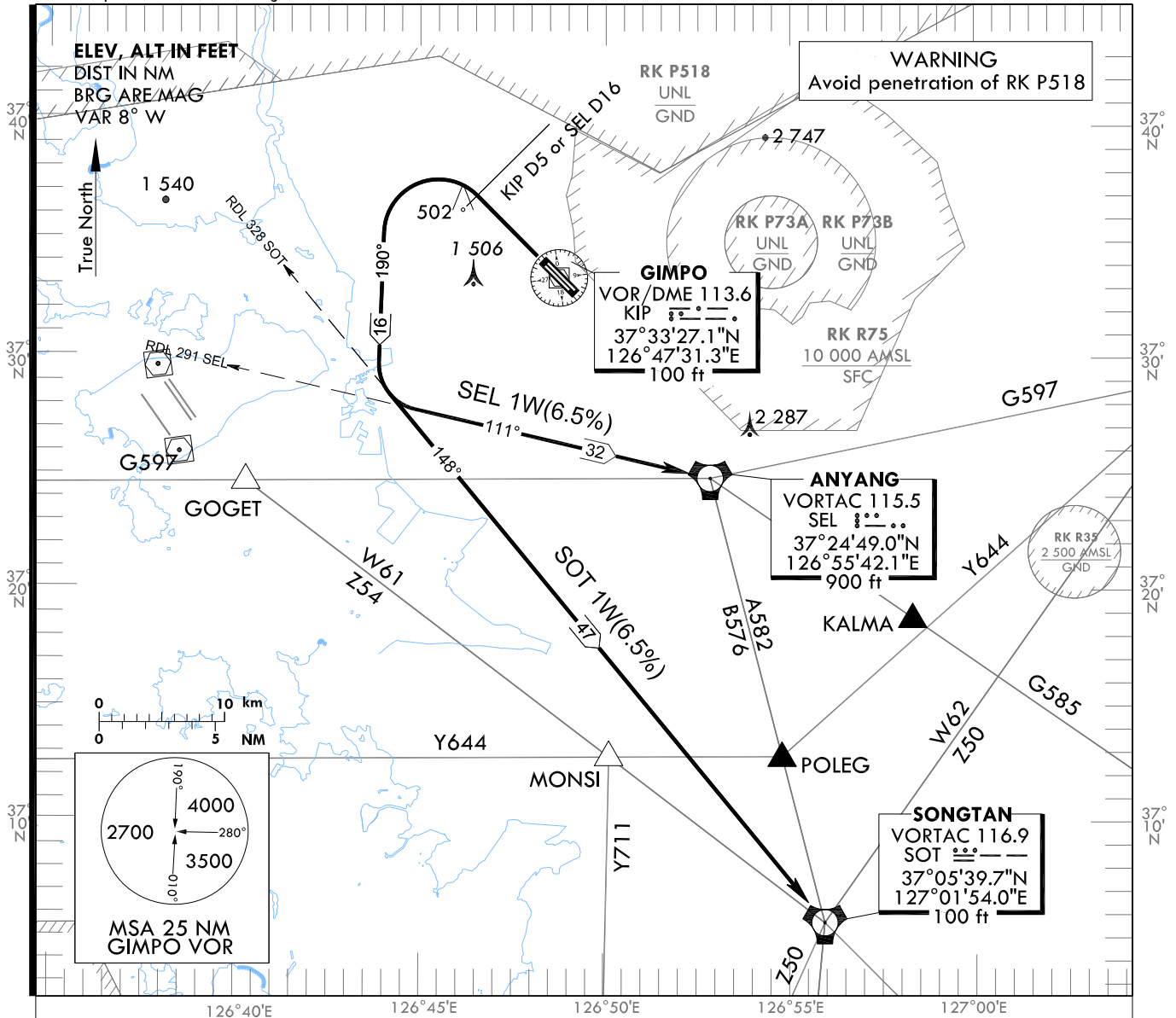
STANDARD DEPARTURE CHART  
INSTRUMENT (SID) - ICAO

TRANSITION ALT 14 000  
TRANSITION LVL FL 140

SEOUL DEP	125.15
	121.4
	124.8
GIMPO TWR	118.1
	118.05

SEOUL/Gimpo Intl(RKSS)  
RWY 32L/R  
SEL 1W, SOT 1W

Note : Departure under ICAO Flight Procedures.



**GENERAL INFORMATION**

1. 6.5% CG necessary for Airspace and ATC purpose and 4.9% for avoiding OBST.
2. If unable to comply with flight restrictions, advise ATC well before departure.
3. Stepped climb : Due to interaction with other routes. Do not climb above 4 000 ft unless cleared by ATC.
4. First turn limited maximum 250 kt IAS.
5. All of turns are based on 25 degrees bank angle due to airspace restriction.

**SEL(ANYANG) ONE WHISKY DEPARTURE :**

Climb on RDL 323 KIP/D5, then turn LEFT to intercept RDL 291 SEL and cross RDL 291 SEL/D8 then proceed to SEL. Maintain 4 000 ft until instructed by ATC.

**SOT(SONGTAN) ONE WHISKY DEPARTURE**

Climb on RDL 323 KIP/D5, then turn LEFT to intercept RDL 328 SOT and cross RDL 328 SOT/D25 then Proceed to SOT. Maintain 4 000 ft until instructed by ATC.

Change : Information of OBST height and symbol.

**INTENTIONALLY**

**LEFT**

**BLANK**



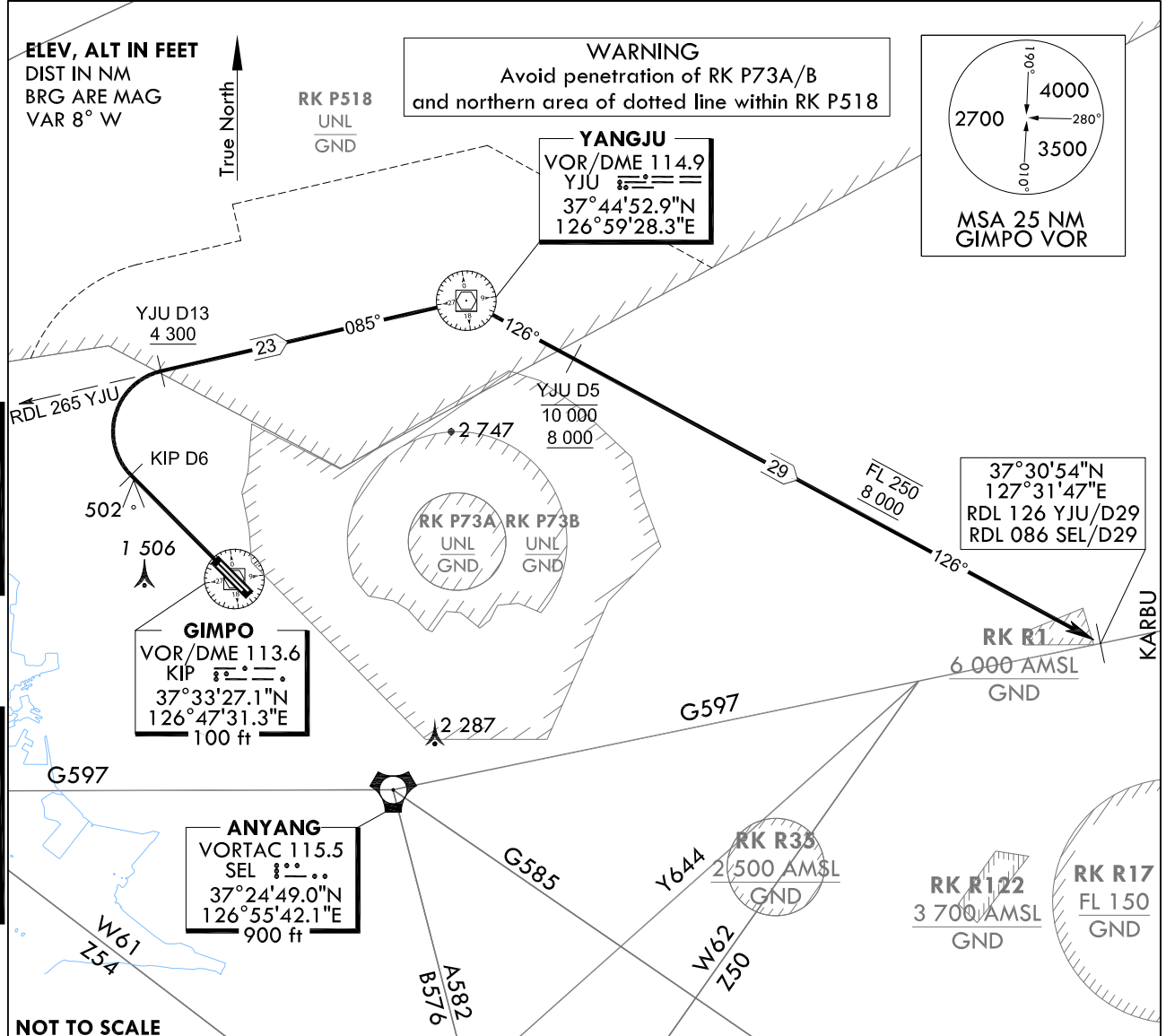
**STANDARD DEPARTURE CHART  
INSTRUMENT (SID) - ICAO**

TRANSITION ALT 14 000  
TRANSITION LVL FL 140

SEOUL DEP	125.15
	121.4
	124.8
GIMPO TWR	118.1
	118.05

**SEOUL/Gimpo Intl(RKSS)**  
RWY 32L/R  
KARBU 1W

Note : Departure under ICAO Flight Procedures.



NOT TO SCALE

**NOTE**

1. Minimum CG 7% to 4 300 ft for noise abatement, then resume normal CG.
2. Request of this procedure shall be made at least 10 minutes prior to take-off.
3. Operating Hours
  - SAT, SUN and Holiday : 0300 - 1200 UTC
  - Other days : 0700 - 1200 UTC

**KARBU ONE WHISKY DEPARTURE :**

Climb on RDL 323 KIP to D6, then turn right to intercept RDL 265 YJU/D13, then proceed to YJU.  
At YJU, turn right to track outbound RDL 126 YJU until joining G597.  
Cross RDL 265 YJU/D13 at or above 4 300 ft, RDL 126 YJU/D5 between 8 000 ft and 10 000 ft,  
then at or below FL 250 until joining G597.

Change : Information of obstacle height and symbol.

**INTENTIONALLY**

**LEFT**

**BLANK**